



# Blackawton Beacon

## April 2018

published jointly by the Parochial Church Council and the Parish Council

## Blackawton Parish Council

### Annual Parish Meeting

**Tuesday 24 April**

6.30 – 8.30 pm

Blackawton Village Hall

- Linden Homes' representatives will discuss the development.
- Eight new commercial units – Construction and management.
- Blackawton Community Website - new website under construction.
- Speakers will be followed by a celebration to thank Blackawton's volunteers.

**All welcome! Your Parish Councillors look forward to seeing you.**

## Blackawton Primary School

### Big Breakfast and Fun Run

Treat your family and friends to a fantastic Sunday breakfast with live music, locally-sourced food and the Sunday papers.

**Sunday 22nd April**

Fun Run 10.00 am

Breakfast served 11.00 – 12.00 am in the School Hall

**All welcome**

**Proceeds to the school**

### Make a Difference Day

#### Wednesday 20th June 2018

This year, Blackawton Primary School has decided to get all of the children at the school involved in a 'Make a Difference Day'. Children across the school will be involved in activities which directly help local people or improve facilities around the village. This might mean the children will be planting hanging baskets, weeding, picking up litter around the play areas, spending time with the elderly, cleaning and clearing areas such as the bus stop, community shop, tennis courts, war memorial, or indeed that the children can clean and polish inside the church. We are looking for ideas from organisations such as the Parish Council, Park Committee, Church Committee, Ambulance and Fire Service, Community Shop and Dartmouth Caring.

Please email [Tanya.Stilwell@blackawtonprimary.org.uk](mailto:Tanya.Stilwell@blackawtonprimary.org.uk) – as soon as possible – if you have some ideas which we could get involved with, or if you are able to offer help/resources.

# St Michael's Church

---



## Spring Coffee Morning

at Lower Collaton

**Saturday 7th April at 10.30 am**

plants, bric-a-brac ~ etc ~ etc

### Services for April 2018

<i>Date</i>	<i>Time</i>	<i>Service</i>
Sunday 1st April <i>Easter Day</i>	7.30 am	Vigil and Service of Light followed by Breakfast
	9.30 am	Holy Communion for Easter Day
Sunday 8th April	8.00 am	Holy Communion
	6.30 pm	Choral Evensong
Friday 13th April	7.00 pm	Women's World Day of Prayer Service <i>(re-arranged from 2nd March due to snow)</i>
Sunday 15th April	11.00 am	Holy Communion
Sunday 22nd April	9.30 am	Morning Worship
Sunday 29th April	11.00 am	United Benefice Communion

### From the registers

Wednesday 28th February

Funeral of Natasha Leggatt

Saturday 24th March

Wedding of Darryl Passmore and Rebecca Stevens

### Reader's Corner

from **Peter Barker**

Daffodils! What a joy it is to see the profusion of yellows, cream, white and orange gleaming in the spring sunshine and brightening up the garden. Wordsworth was surely right that they can lift our spirits: as I see them "my heart with pleasure fills, and dances with the Daffodils." Many of my daffodils were in full flower already when 'the beast from the east' and 'storm Emma' arrived. As they lay limp and battered I thought the blooms were dead and over; but a couple of days later they had lifted their heads again and were dancing in the breeze once more. No wonder the daffodil is sometimes used as a symbol of resurrection: from that lifeless seeming, tomb-like bulb, buried in the dark ground, the upward growth and sudden blaze of golden light in all its brilliant beauty.

Look for the daffodils in the window on the left just inside the door to St Peter's Church in Stoke Fleming. In the left hand light Margery as a girl (watched over by her guardian angel) is walking the path of faith ('fides' – the label is in Latin); around her feet are thorns and thistles – life is not always easy. Tragically Margery died in childbirth aged only 20: in the right hand light of the window, labelled hope ('spes') she is being ushered into the presence of Christ; now there are red flowers at her feet. Christ in the centre light stretches out his hand to her in love ('caritas'), his other hand raised in blessing, and at his feet – yes, you've guessed – daffodils, symbol of his resurrection. It's a moving and powerful depiction, executed with beautiful intricate detail and an unusual colour palette, and worth a good look.

Easter Day: "Alleluia, Christ is risen!" That's the reason to celebrate. It's Jesus' resurrection, after confronting the worst the evil could do, which gives us hope. Hope that forgiveness and goodness and love and justice are the values that ultimately prevail, that life is not fundamentally random and meaningless, that there's a future as well as a past. Yes, I shall be enjoying an Easter egg too – my daughter, bless her, has sent me a very scrumptious-looking one indeed. This year I shall have the joy and privilege of leading the Easter Celebration at St James', Slapton. I hope that lots of you will be celebrating at St Michael's too: "He is risen indeed. Alleluia!"

Wishing you joy and hope, this Easter, and always.

## Christian Aid Jumble Sale

from **Kate Janman**

This will be held on **Saturday 12th May**, a week earlier than usual because of not only the Cup Final but also the royal wedding being on our usual day.

## Our church team

Vicar	Revd Alison Shaw	770868	Lay Readers	Sally Green	712438
Churchwarden	Kate Janman	712362		Frank Robinson	712249
				Lyn Robinson	712249

# Village Life

## Charity walk

from **Tony Everett**

Thank you to you all for helping me raise the funds for Landworks in Dartington which does fantastic work with prisoners helping them to readjust to normal life. To date they have had great success and it is a well-established charity. A total in excess of £5500 was raised.

Best regards and thank you.

## Blackawton WI

from **Frances Wood**

We have filled the month up with events and activities. On the 5th March we revisited the Jewish Synagogue in Plymouth. There is so much to learn about its history, the Jewish religion, its members, and its connection to Plymouth that we have to go again for a third time. It really is worth a visit if only to listen to brilliant guide Jerry Sibley, and meet his awesome cat Dexter. A few days after our visit there was a news item on BBC Spotlight about the Synagogue, and not surprisingly Trip Advisor said it has been voted the most visited and inspirational historic venue in Plymouth.

Our A team came second in the local rounds of the Devon county quiz and have since progressed to the finals although not winning, finishing with a respectable 68% total. Well done Sandra Tope, Fiona Kyte, Christine Bond, Sarah Green and Frances Wood.

The next jolly is a group spending a week at St Ives on a walking holiday. Plans are in progress for a visit in July to The Royal Theatre Plymouth to see Miss Saigon; a couple of days visiting London for a guided visit to the Houses of Parliament and other venues; a few days in Liverpool visiting sights especially the Terracotta Army at the World museum; and a Devon Federation holiday to Shropshire.

Finally, we are having a fun competition where each member (if they want to join in) has been given a potato to grow in a bag and the member who grows the biggest crop is the winner.

## The George Inn

from **Ruth Coe**

Thank you Blackawton – thanks to farmers with tractors and builders with snow-ploughs who cleared the village streets and lanes, to the friends and neighbours who shovelled snow to enable access to front doors, to the volunteers who kept the Community Shop open for all, and especially to my team TGI who worked long hours to keep the “clubhouse” open for hot drinks, meals and an “apres-snow” social hub – Blackawton may have been cut off for two or three days again, but thanks to all these people this was a more positive experience than it might have been. A gentle reminder that it doesn’t have to snow for local residents to use the Community Shop, or stop by The George Inn for a coffee, these assets are there for the community whatever the weather, long may it remain so.

Hopefully spring is not far away, rumours of snow at Easter remain unproven but could yet give us another “interesting” weekend. Wouldn’t it be lovely instead to have weather that tempted us to eat and drink al-fresco?

The George Inn is taking bookings for the traditional roast lamb over Easter, there will be an Easter Egg hunt for small folk on Easter Sunday morning and we are open for coffee then. St. George’s Day is generally a low-key event but our menu on 23rd April will celebrate good traditional English dishes with the emphasis on local ingredients as well as flavour.

The worm-charming committee are seeking volunteers to attend meetings to plan this year’s late May Village Day festival, contact us on 712342 or stop by if you would like to help.

We have heard rumours of people looking for work, but so far no-one has contacted us. We do still need bar staff, and some part-time help on the housekeeping and kitchen teams. Please phone, e-mail or come along for a chat if you are interested in joining our team.

Enjoy the Easter break where-ever you are.

## Poo bags

from **Carey Burton**

Thank you to the responsible person who frequently picks up after a dog, using either purple or black poo-bags. But please will you take your filled poo-bags home, or place them in a rubbish bin, and **stop** leaving them on our garden wall.

## Wormcharming

from **Steve Thomas**

### Wormcharming undergoes full health check

On 13th March, Wormcharming (at the ripe old age of 34) was admitted to the A&E (Annelid & Earthworm) department at the George Inn for a full health check. The investigative operation revealed a wide range of life-threatening problems which have arisen following recent enforced cuts in key manpower areas within the NHS (National Hermaphrodite Service, a.k.a. the Wormcharming team).

Subsequently, a village-wide appeal was put out for “new blood” and, on Tuesday 27th March, a follow up procedure was undertaken in an attempt to restore the patient back to full health.

It is hoped that Wormcharming will be fit and well enough to make its customary annual appearance on **Sunday 27th May** this year (where, coincidentally, the theme for the day is planned to be “70 years of the National Health Service”). However, at the time of writing, the outcome remains uncertain.

In the meantime, the appeal for “new blood” is continuing. An up-to-date report on Wormcharming’s progress can be found at [www.wormcharming.co.uk](http://www.wormcharming.co.uk).

## Blackawton School garden

**Gardentime** is helping to support Blackawton School's garden development and healthy eating through their new farm shop. They want to encourage people to buy local, sustainable products and, where out of season, to provide fairtrade or organic alternatives.

The school are running a competition to create a **healthy eating alphabet design** to go on their bags for life. Gardentime will donate £1.00 from every bag for life sold, directly to the school. In turn the school will be using this money to support their new garden development in order to grow fruit and veg to use in the school kitchen. The competition winners will not only have their design on the bags, but they will also get to be VIP guests at the grand opening – including cutting the ribbon!

The grand opening will be taking place on **Saturday 28th April** at 11.00 am.

## West Dart Bus services

from **Tony Hemmings**

The West Dart Bus runs a regular service to nearby towns, as follows:

Dartmouth	every Friday at 10.15 am.
Totnes	1st and 3rd Tuesday of the month, at 9.50 am.
Newton Abbot	last Wednesday of the month at 9.50 am.

For the Newton Abbot trip you need to book in advance; please ring Tony on **712375** or **07776 432309**, or email him at [tony.westdartbus@outlook.com](mailto:tony.westdartbus@outlook.com).

# Community Shop

from **Tony Everett**



The snow has been and gone and I am sure we all in the village appreciate the service the shop offered. We should be incredibly grateful to all those who went out of the village to bring in vital supplies in very poor conditions. Some of us who were in the village in the late seventies remember Bertha Crocombe who owned the shop. During the heavy snow she used to prioritise those customers who supported the shop in times of fine weather! Thankfully that did not happen with the community shop but it does highlight the viewpoint that the shop is vital in times of severe weather. If we all used it as much as we did during this snowstorm the shop would be a very sustainable operation. Again, the phrase "use it or lose it" comes to the fore.

Progress at the new shop is going well and much building work has been undertaken. We are still looking for any views villagers may have on the future layout or items to stock. On a recent analysis some products were even cheaper than the supermarkets so it is well worth taking a longer look at anything you can buy.

**We are still very short on volunteers** for the shop and the rota is becoming harder and harder to fill. Ben Rodwell, the manager, has been very good in covering where necessary.

From **Derek Hallett**: As I sit here watching the snow come down again I thought I would write a few words in praise of all those that worked so hard to keep the shop going as best they could in the recent spell of bad weather. Well done all. I hope that all those that managed to find the shop at this time continue to support it in the good times so that it is still there when something like this happens again.

### **Wanted: Post Office and Shop Volunteers**

We are really keen to talk to anyone who could help by manning the Post Office counter for one or more shifts a week. Training will be provided.

If we are to keep this vital element of the shop we do need **volunteers to step forward please!**

If you might be able to help, please ring the shop on **712157** or contact Jo Rogers on **712522**.

Support your shop by joining the

### **100 Club**

**Prizes every month!**

**Tickets are still available**

For more information contact Jo Rogers on **712522** or ring the shop on **712157**.

### **Shop opening times**

Monday to Friday	8.00 am – 6.00 pm	
Saturday	9.00 am – 1.00 pm	afternoon: closed
Sunday	10.00 am – 12.00 noon	afternoon: closed

### **Post Office**

Monday to Saturday 9.00 am – 1.00 pm

The shop's telephone number is **712157**. **See you in the shop soon!**

# Village Hall

from **Adrian Kyte**

## Horticultural Show

This year's show will be on **Saturday August 18th** so now is the time to start planning or even planting your entries. Due to falling entries there will not be a tallest Sunflower class this year.

## April Events at the Village Hall

### Annual Parish Meeting

Tuesday 24th, 6.30 – 8.30 pm. Topics will include the new community website, Linden Homes' development, commercial units, celebration of Blackawton's volunteers.

### Parish Council Meeting

Tuesday 10th at 7.30 pm. This is the **second** Tuesday of the month.

### Whist and Euchre Drives

Monday 9th and 23rd at 7.30 pm. *Event parking only.*

### WI

Wednesday 18th at 7.30 pm. *Event parking only.*

## Village Hall parking

Sometimes users of the Village Hall (VH) find that there are vehicles already parked in the VH car park which can cause congestion. Officially only vehicles belonging to hall users, allotment users or tennis court users should be parked in the car park but the VH is a community resource and parking in the village is a problem for many people. To try to avoid problems a notice will be displayed in the display cabinet by the VH main entrance with a list of events identifying those that need the car park. If you are one of the people who habitually or occasionally park in the car park please check the notice and park elsewhere on the occasions when the car park is needed for hall users.

## Booking the Village Hall

The easiest way to check availability and make a **provisional** booking of the Village Hall is to use the internet. There are two easy ways to check availability or make a provisional booking:

1. Enter <http://www.hallmaster.co.uk/ViewRoomDiary.aspx?roomId=81> in the address bar of your Internet browser and press 'Enter'.
2. Via Facebook ([www.facebook.com](http://www.facebook.com)); search for "Blackawton Village Hall" then click on 'Book Now'.

Either method should take you directly to the booking website. Use the 'Next >>' and '<<Previous' buttons to get to the month required then if the hall is not already booked click the '+' sign on the day you want then add the details for your event to create a provisional booking. You will receive an email within a couple of days with an invoice and a booking form, provisional bookings only become confirmed bookings after the deposit is paid which should be within 2 weeks of the invoice date. The above are the preferred methods for booking the hall but if you don't have internet access please phone 712159.

## Village Hall Furniture

If there are no bookings that need the VH furniture it can sometimes be borrowed in return for an agreed donation and deposit but **only by prior arrangement**. A member of the committee should be present both when the furniture is taken and returned. Donation and deposit must be paid before any furniture is removed from the hall. A list of who is on the VH committee, along with contact details, is posted on the notice board next to the main entrance door.

# Parish Council

from **Annette Thom**, Parish Clerk

## Community Website

The **new** Blackawton Community Website is going live!

To advertise your business, community group or event contact the Parish Clerk, Annette Thom, on **712417** or **parishclerk@blackawtoncommunity.com**

# Notes of the Parish Council Meeting

Held at 7.30 pm on Tuesday 6th March 2018 in Blackawton Village Hall

## Open Forum

Two emails which send thanks for work done by volunteers during the snow were read. BPC minuted its thanks to the farmer at Higher Seawardstone Farm for clearing the road from Clyston Cross to the main road, to Cllr Perry, the Community Shop volunteers, staff at The George, and to the many others in the Parish who did things big and small to mitigate the effects of the recent heavy snow.

Present: Cllrs Joyce (Vice-Chairman), Mallyon, Lewis-Davis, Coe, Thomas and Perry, District Councillor Hicks, Devon County Cllr Brazil, and A Thom (Clerk). Apologies were received from Cllr Rake.

## New Councillor's Declarations of Acceptance of Office

Newly co-opted Cllr Steve Thomas was congratulated and welcomed. His signed declaration and agreement to receive emailed agendas were both received.

## Report from District Councillor

From 1 April 2018 SHDC will not accept cheque payments at Follaton House. Cash and cheque payments to SHDC can still be made at local shops and Post Offices.

SHDC's Slapton Line Car Parks have been damaged by recent storms. The toilet facilities in the Car Park near the junction with the road to Slapton have been damaged by a burst pipe.

Cllr Hicks reported that SHDC has approved a revenue neutral 2018/19 budget. SHDC has no core central Government funding in 2018/19. It still receives some income via central Government such as a Council Tax Support Grant and retains an element of Business Rates. Cllr Hicks reported that DCLG expects Local Government funding via central Government to be further reduced in the future.

## Planning Issues

### SHDC Planning Approvals/Refusals

The following decision was noted:

3587/17/FUL Sea Glimpse Blackawton TQ9 7DE. Replacement dwelling and garage (Amendments to consent 06/2523/15/F). **Conditional approval.**

### Review of New Applications

BPC made the following comments on current applications:

0318/18/VAR Development At SX 8052 5109, Town Farm, School Lane, Blackawton, Devon. Application for variation of condition 2 (Approved Plans) following grant of planning permission 06/0992/14/F (Erection of 60no. dwellings, employment floorspace, highway layout, incidental open space, car parking, playspace for Blackawton Primary School and multi-use games area). **Support.**

4337/17/FUL 2 West Hartley, Blackawton, TQ9 7DT. Readvertisement (Revised Plans Received) Internal and external alterations to dwelling. **Support.**

Application to vary the premises licence for The Laughing Monk Restaurant, Totnes Road, Strete, Dartmouth, TQ6 0RN. **No comment.**

### Consultations

Strete Neighbourhood Plan published in draft form for consultation closes noon on Tuesday 03/04/2018. **No BPC comment.** The Plan is on the BPC website.

DCC Consultation: review of traffic sensitivity classification of the highway – for roadworks. Closes 31 March 2018. No BPC comment.

## Village Weed Control

BPC prefers natural methods where possible. The Clerk will meet with the relevant SHDC Officer and report back to BPC's April meeting.

## Community Website

The Clerk was delegated authority to liaise with the designer, in consultation with Cllrs. A revised site is required in three weeks i.e. well before the next meeting of the Parish Council. **Community groups and local businesses are invited to promote what they do.** Please contact the Clerk.

## Report from County Councillor

Cllr Brazil reported that DCC will increase its Council Tax demand by 5% in 2018/19: 2% of the increase will be ring-fenced for adult social care. DCC will receive an additional £4.6 million for highways. Half of

the Slapton Line road has been washed away at the Strete Gate end. Funds will be sought from central Government for reinstatement works.

## Finance

### Update on current financial position

The Report which showed a 2017/18 balance of £4,650.32, a total balance of £43,297.32, and an unearmarked balance of £6,899.82, was approved.

### Payments made, due and received

The following payments were approved:

Salary February 2018	£554.30
MAT Electrics, night landing site and a new power supply	£7,970.72 (incl VAT)
HMRC PAYE February 2018	£43.81
Westdown Farm Ltd, Cemetery hedge trimming,	£54.00 (incl VAT)
SHDC, TAP funded weed spraying 2017	£126 (incl. VAT)
CE07, Reimbursement of February phone bill and stamps	

The Clerk noted that BPC will receive a grant of £3,294.37 which will cover the portion of the MAT Electrics invoice. The receipt of the following payment was noted: Transparency Code grant £523.55 from NALC towards the new community website. Shared 2018/19 TAP grant applications: £635.05 for drain clearance, £399.40 for the supplementary lengthsman service, and £311.53 for village weed spraying.

## Internet Banking

It was agreed that

- The Clerk will be authorised to have full delegate user access to BPC Bank Accounts.
- The Clerk will create transactions that have been approved in accordance with BPC Financial Regulations and that the transactions will then be authorised by two signatories (see Application for Delegate user access Terms and Conditions 5.2.2).
- That signatories may obtain internet banking access. It was noted that they must comply with BPC Financial Regulations and Lloyds Bank security requirements. The device must have a high level of security and the bank account must not be located by Google search.
- That a standing order will be used to meet BPC's obligations for the Clerk's base pay and pension contributions.

Cllrs Joyce, Rake and Mallyon will establish internet banking access and set the Clerk's access.

## Payroll

It was agreed that HMRC payroll from April 2018 may be processed by the Clerk if this is feasible and efficient.

## General Data Protection Regulations

The Clerk summarised the new GDPR requirements which commence 25 May 2018. A project will be need to carried out to ensure compliance including an audit of data held, to establish new consent forms, and to locate a Data Protection Officer.

## Annual Parish Meeting

The 2018 APM will take place on 24 April 2018 from 6.30 pm – 8.30 pm. As in 2017 the meeting will be a celebration of Blackawton's volunteers. Topics will be the new community website, Linden Homes' development, and the new commercial units at the development.

## Reports from Parish Councillors and Wardens

The Clerk will enquire about the timing of an upgrade to sewage works in Blackawton. It was explained to the meeting that there are regular tankers to pump out the Blackawton sewage works, Blackawton sewage pollutes Slapton Ley, and farmers are in a nitrate vulnerable zone. The Environment Agency is aware. The demand on the works will increase as a result of the new homes being built.

BPC will work to install an additional grit bin at Shepleigh Hill – a need identified during the recent cold weather.

## And finally ...

Thank-you to the many people in the community who did things big and small to minimise the effects of the recent heavy snow.

The next Parish Council meeting will take place at 7.30 pm on Tuesday 10th April, in the Village Hall. You are most welcome to attend and raise any issues which may be of interest or concern to you.

## Council contacts

Cllr Ruth Coe	712131 or 712342	tgiblackawton@yahoo.co.uk
Cllr Lorien Joyce, Vice-chair	712187	lorien818@hotmail.com
Cllr Samantha Lewis-Davis	712520	slewisdavis@yahoo.co.uk
Cllr Alan Mallyon	712799	amallyon1@gmail.com
Cllr Jack Perry	712459	jack@westdownfarm.plus.com
Cllr Simon Rake, Chair	712103	simonbpc@garradelta.com
Cllr Steve Thomas	712 840	steve@fatboydesigns.co.uk
Annette Thom, Parish Clerk	722417	parishclerk@blackawtoncommunity.com

## Other contacts

Police non-urgent reporting	101	
PC Nick Hill	837308 or 0845 8814879	
South Hams Cllr Michael Hicks	01548 821129	cllr.hicks@southhams.gov.uk
South Hams District Council	861234	customer.services@southhams.gov.uk
SHDC emergency out of hours	867034	
Devon County Cllr Julian Brazil	01548 511109 or 07970 971140	julian.brazil@devon.gov.uk
Devon County Council	0845 155 1015 or 0345 155 1015	customer@devon.gov.uk

# the Wider Community

## Care in the South Hams

from **Northern, Eastern and Western Devon Clinical Commissioning Group**

To help meet the needs of people who wish to be cared for in their own homes and stay within their community, the NHS and other health and social care providers for Kingsbridge and South Hams need to increase the number of paid carers and grow compassionate networks in the area.

- Would you like to be employed on a flexible, one to one basis, to provide personal care to someone in Kingsbridge or the surrounding areas?
- Could you be a Compassionate Neighbour, doing the little things that can make a big difference, such as shopping or making a meal for a neighbour?
- Are you in a voluntary group that could be part of setting up compassionate networks in Kingsbridge and the South Hams?

To find out how this will be achieved and to share your own ideas there is an event in **Kingsbridge Library** on **19th April** between **10.00 am and 2.30 pm**, including a free buffet lunch.

The event is free but **booking is essential**: call **017523 964250** to book your place.

## from the Editor

Please send your Beacon contributions by email to **beacon@blackawtoncommunity.com**. Contributions on paper can be dropped off at the Community Shop, the George Inn or at 1 The Cross, Park Lane. The deadline for contributions to the April edition is **Saturday 21st April**.

The Beacon is now printed by volunteers using the printer in the church. We need to pay for the paper and printing costs, and make a contribution towards replacing the printer when it wears out. Some of this cost is covered by our advertisements, but **we need more**. Please donate if you can. Put **Beacon** on the outside of the envelope and drop it off at the Shop, or the George Inn, or the church's donation box beside the visitors book. Please note that cheques must be payable to **Blackawton Parish Church**. Thank you.

# Advertisements

## Did you know...

### South Hams District Council

fund a loan scheme for homeowners, for essential home repairs and improvements? \*  
For more information, visit [www.wrcic.org.uk](http://www.wrcic.org.uk) or call **01823 461099**,  
or email [enquiries@wrcic.org.uk](mailto:enquiries@wrcic.org.uk)

Your local, not for profit lender working in partnership with South Hams District Council

### Wessex Resolutions CIC

Heatherton Park Studios, Bradford on Tone, Taunton, TA4 1EU

\* **Subject to Status**

## We do the smaller jobs and some big ones

Need some help? Look no further

**Clearing and cleaning gutters and fascias**

**Tree work**

**Fencing - new and repairs, wood treatment**

**Garden work**

**Shed repairs – roof felting, timber treatment etc.**

**Pressure washing**

Everything considered

**Call Colin 712250 or Alan 712799**

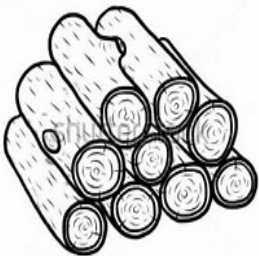
## FIREWOOD FOR SALE

**BARN DRIED LOGS AND KINDLING**

*Free delivery*

Also mobile log splitter and operator for hire  
plus tree and hedge care carried out  
and garden clearance

**CHRIS 079 122 869 17**



Trusted Local Reliable

# DARTMOUTH HOLIDAY HOMES

Holiday Letting Specialists

[www.dartmouthuk.com](http://www.dartmouthuk.com)  
01803 833082



## **NEW HOMES COMING SOON!**

Linden Homes have started work on a beautiful range of 2 and 3 bedroom bungalows and 2, 3, 4 and 5 bedroom homes in the stunning village of Blackawton.

Sales information will be available early in 2018.

All enquiries to 01803 700 638

[Lindenhomes.co.uk/blackawton](http://Lindenhomes.co.uk/blackawton)

  
**Linden**  
HOMES

## Dartmouth Acupuncture and Homeopathy

Various conditions treated including:

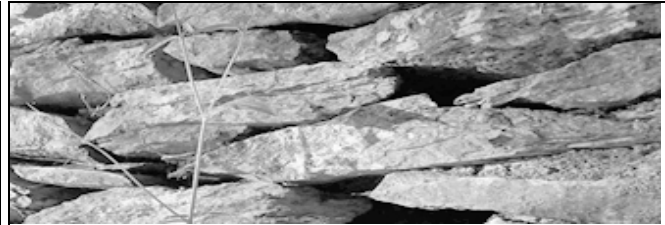
Back pain, muscular & skeletal conditions • stress, anxiety, mild depression • hayfever • migraine • IBS • conditions of pregnancy • IVF and fertility support

Appointments at the Forces Tavern,  
TQ9 7DJ

David Weiss  
01803 712879

[www.dartmouthacupuncture.co.uk](http://www.dartmouthacupuncture.co.uk)

Registered member of  
The British Acupuncture Council  
Licensed Homeopath



## Simon Crane

Traditional stone wall building and repair  
07922 80597  
[traditionalstonewalls@gmail.com](mailto:traditionalstonewalls@gmail.com)



## Madre Terra

Luca Scorza      07843 140852 / 01548 521722  
Tree surgeon and gardener      Organic, Biodynamic approach  
[gianscorza@gmail.com](mailto:gianscorza@gmail.com)      Hutterleigh, Blackawton, Devon  
Free quotes and friendly advice



**SCRUFFY PUPS DOG GROOMING**  
Pittaford Farm near Slapton, TQ7 2QG

**25% DISCOUNT OFF YOUR DOG'S FIRST GROOM**  
FREE local collection and delivery service available

Contact Justine - 07967 965073



Looking for qualified tree  
surgeons and foresters?

**Then look no further!**

Knowle Tree Services are one of Devon's leading Tree Surgery and Forestry companies. Our head office is based in Totnes covering all of Devon.

All aspects of tree surgery, forestry and woodland work undertaken

Log deliveries  
Free estimates

Hedge cutting  
Fully insured

Contact: **07711 828184 / 01803 813286**

[www.knowletreeservices.co.uk](http://www.knowletreeservices.co.uk)

# RGC mobility

KITCHENS & BATHROOMS FOR INDEPENDENT LIVING

Wet Rooms • Walk-in Baths • Wash & Dry Toilets • Seated Showering  
Level Access • Grab Rails • Raised Toilets • Adapted Taps  
Accessible Ovens • Rise & Fall Hobs Worktops & Cupboards

Collingwood Road Dartmouth TQ6 9JY 01803 834622 [rgcbuildingsupplies.co.uk](http://rgcbuildingsupplies.co.uk)

## Parish Diary

### April 2018

Tuesday 3rd	9.50 am	West Dart Bus to Totnes	
Friday 6th	10.15 am	West Dart Bus to Dartmouth	
Saturday 7th	10.30 am	Church Spring Coffee Morning	Lower Collaton
Monday 9th	7.30 pm	Whist and Euchre Drive	Village Hall
Tuesday 10th	11.55 am	Mobile Library	War memorial
	7.30 pm	Parish Council meeting	Village Hall
Friday 13th	10.15 am	West Dart Bus to Dartmouth	
	7.00 pm	Women's World Day of Prayer Service	Church
Tuesday 17th	9.50 am	West Dart Bus to Totnes	
Wednesday 18th	7.30 pm	WI	Village Hall
Thursday 19th	10.00 am	Care in the South Hams	Kingsbridge Library
Friday 20th	10.15 am	West Dart Bus to Dartmouth	
Saturday 21st	-	Beacon deadline for the May edition	
Sunday 22nd	10.00 am	Big Breakfast and Fun Run	School Hall
Monday 23rd	7.30 pm	Whist and Euchre Drive	Village Hall
Tuesday 24th	6.30 pm	Annual Parish meeting	Village Hall
Wednesday 25th	9.50 am	West Dart Bus to Newton Abbot – ring 712375 or 07776 432309 to book	
Friday 27th	10.15 am	West Dart Bus to Dartmouth	
Saturday 28th	11.00 am	Grand opening of new farm shop	Gardentime

### May 2018

Saturday 12th		Christian Aid jumble sale	Village Hall
Sunday 27th		Wormcharming	